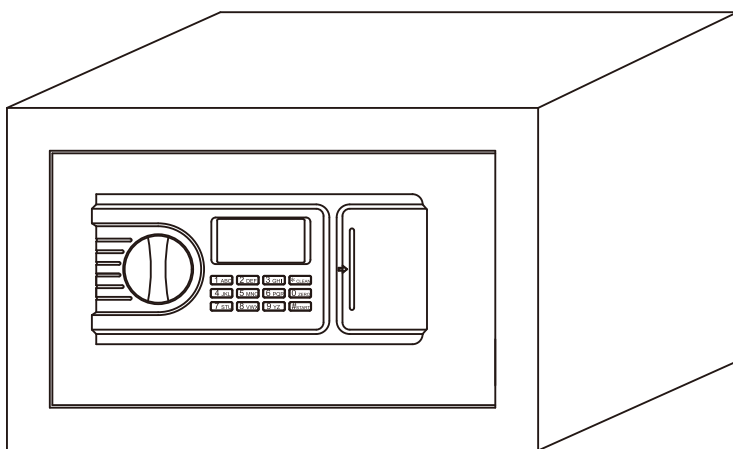


SECURITY LOCK BOX(EE) INSTRUCTIONS



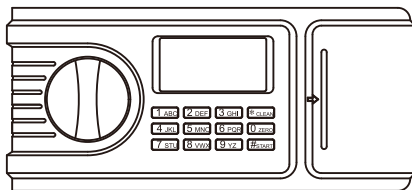
* **EE series product first opening**

There are two ways to open:

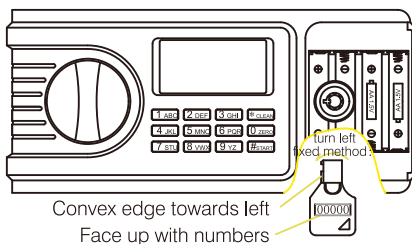
1. Please take off the cover(on the right of panel), put 4 batteries of 1.5V in the panel battery box,then input the factory password "1234", in 5 seconds, turn the knob to open the door.

2. It is opened with the emergency key, and the method is as follows:

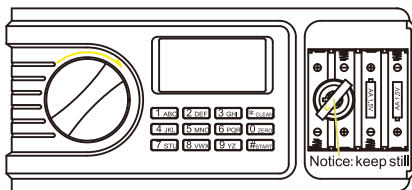
(1) . Move the cover to the right and take out the cover



(2) Insert the emergency key into the lock hole, turn the key

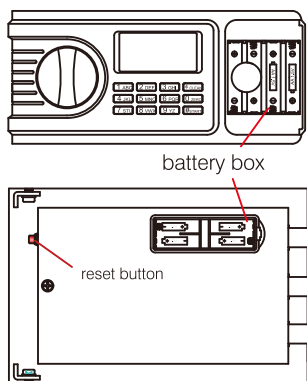


(3) Turn the knob to open the door



Please keep the emergency keys out of the safe.

* EE series set the code



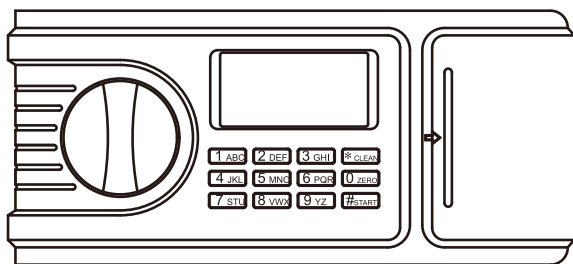
1. Put 4 batteries of 1.5V in the battery box (on the panel or on the back of the door)

2. Set or change the master code While the door is opened, press the button "0" "0" (twice"0"), then press the reset button (on the left-side of back of door), the screen is awakened, then input any 1-8digits you want, press "#" to confirm, display "in" on the screen, indicating that the new code has been accepted and stored.

3. Set or change the personal code

While the door is opened, press the reset button(on the left-side of back of door), the screen is awakened, then input any 1-8 digits you want, press "#" to confirm, display "in" on the screen, indicating that the new code has been accepted and stored.

* EE series opening steps



1. Input the code, If the password is correct, it displays "open" and then turns the knob to open the door. If the password is wrong, it will display "Error" and can be reentered.

2. In 5 seconds, rotate the knob and pull out, the door will be opened.

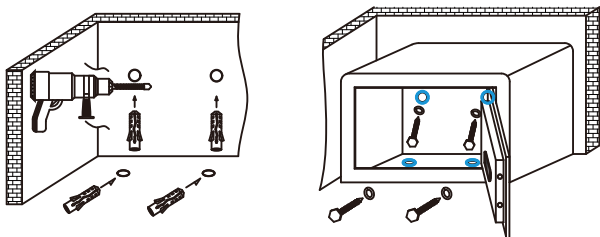
3. Close the door, then rotate the knob left anti-clockwise to lock the safe.

* Notice

1. If 3 incorrect codes input continuously, the beeps sound for 60s, If another 3 incorrect codes input again after 60s, then the sound for another 60s, and display "hold" on the screen
2. When the power icon on the screen displays low, indicating that you should change the batteries.
3. If you forgot the code, use the emergency key to open the safe as the first opening, and then press the reset button (on the left-side of back of door) to reset the code.
4. The "#" on the operation panel is said confirmed, and the "*" on the operation panel is delete key, It means that when you press the * key, one previous inputs are deleted. If you press the "#" + "*" keys, the password you will follow will not be visible.
5. After any key pressed for 20 seconds, no subsequent key input into, system will be sleep, the front input cleared
6. If your emergency key is inadvertently lost, please find the product serial number on the door, provide relevant information when purchasing, we will provide you with paid key service

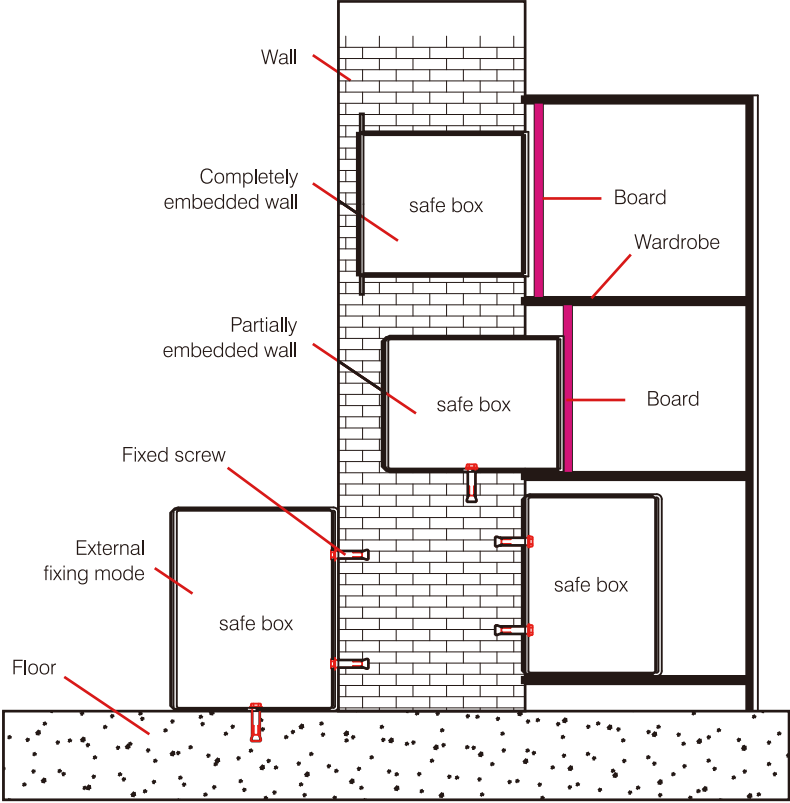
Please keep the emergency keys out of the safe.

If you need to be fixed into the wall, please refer to the following fixed method:



1. Selected location, Impact Drill drilling hole on the wall and ground according to size to expansion tube
2. Inset expansion tube.
3. Fix the hole in the box on the wall
4. Screw in the expansion tube

Recommended fixation method



Packing accessories :

Item	Picture	Qty	Item	Picture	Qty
emergency key		2	mounting screw		4
instruction book		1	batteries		4
mat		1	Fireproof bag		1