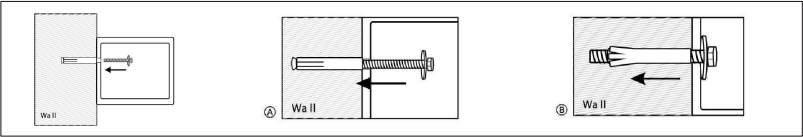


Hold down the * key first, and then press the 8 key. The buzzer can be turned on/off, and can be switched.

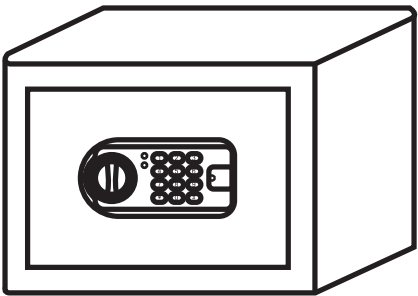
NOTE: When the buzzer sound is turned off, normal use is silent, but the buzzer will still ring if the wrong password is entered.

➤ Mounting



- ① Drill holes for expansion bolts in the right place;
- ② Turn the expansion bolts anticlockwise to separate;
- ③ Use the expansion bolts to secure the case to the wall;
- ④ Make sure the case is mounted in place as required and then tighten all screws.

Thank you for choosing our products, and we will provide you with the most perfect after-sales service. If you have any questions, please feel free to contact us. Your satisfaction is our aim.







SAFE BOX

INSTRUCTION MANUAL

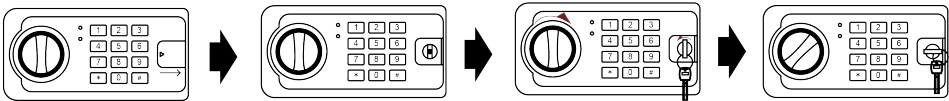
Thank you for choosing our product. Please read this user manual carefully and contact us if you have any questions.

【NOTE】 When you receive the package, please check if the safe function is working properly (please contact us if the safe you received is damaged, dent, peeling or can't open the door) and if the part included in the accessory package are complete.

The following PART LIST is what you receive:

Picture	Item	Qty	Picture	Item	Qty
	Emergency Key	2		Emergency Empty Battery Box	1
	Instruction Book	2		Mounting Scerw	4

➤ Open the door with key



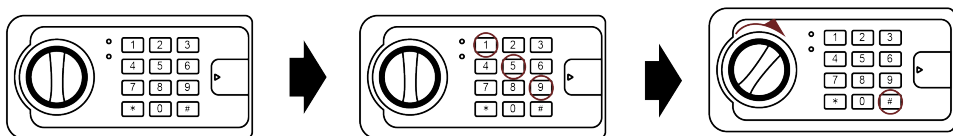
- ① Find the emergency keys in the accessories bag

- ② Press to open the emergency lock cover
- ③ Insert the emergency key vertically and turn it counterclockwise to the horizontal angle.
- ④ Clockwise turn the knob to open the door

CAUTION : Finish operation, pull out the emergency key and keep it in a safe place, PLEASE DO NOT KEEP THE EMERGENCY KEYS IN THE SAFE!

➤ Open the door with password

First open the door with the key, and open the square black battery box behind the door, put four 1.5V AA batteries in the correct direction, and you will hear 2 buzzer beep, indicating successful access to power.



- ① Input the preset code 159 and press the “#”, the green light will on and you will hear 2 buzzer beep.
- ② Rotate the knob clockwise and pull outward, the door will open.
- ③ If you input the wrong digits, you can press “*” to clear and input it again.
- ④ Finish operation, close the door and turn the knob anticlockwise to lock door.

➤ Set User Code

- ① Open the safe and keep it unlock
- ② Press the reset button behind the door, the green light will on and you will hear 2 buzzer beep
- ③ Input 3-8 digits new code and press “#” to confirm
- ④ You will hear 2 buzzer beep, it means your new code is successfully set

➤ Set Master Code

- ① Open the safe and keep it uncock
- ② Press “00” button then press the re-set button behind the door, the green light will on and you will hear 2 buzzer beep
- ③ Input 3-8 digits new code and press “#” to confirm
- ④ You will hear 2 buzzer beep, it means your new code is successfully set

➤ Automatically Locked

- ① Three continuously wrong entries will activate the warning beep for 20 seconds
- ② Another three continuously wrong entries will activate the warning beep for 5 minutes.

CAUTION : The key pad would be disabled during the beeping. You can only stop the beeps by opening the safe with emergency key and power-cut by removing the battery

➤ Silent mode